

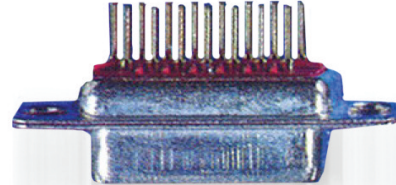
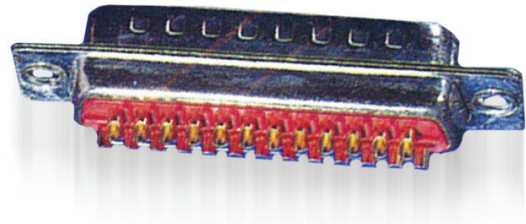
## STANDARD HIGH PERFORMANCE DEE

Designed for demanding industrial applications, McMurdo's Dee connectors offer precision turned contacts.

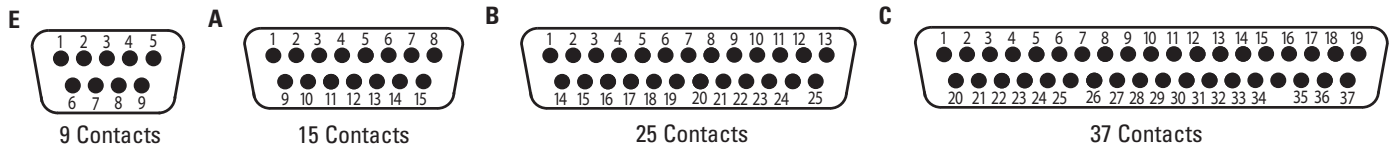
Standard Dee offers a minimum of 500 operations.

### KEY FEATURES:

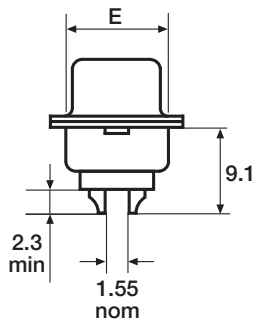
- Precision turned contacts - for connection durability.
- Available in 4 shell sizes - providing up to 37 contacts
- Solder bucket, straight p.c., 90° p.c.
- Tinned and dimpled shell options - for EMI/RFI shielding.



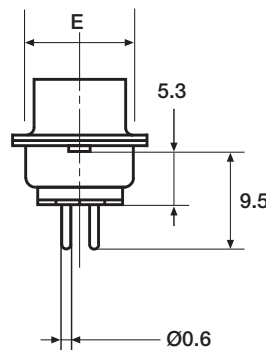
### CONTACT ARRANGEMENT (VIEWED FROM MATING FACE OF MALE CONNECTOR)



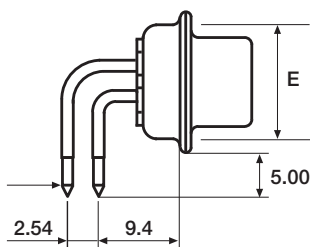
### SOLDER BUCKET



### STRAIGHT P.C.

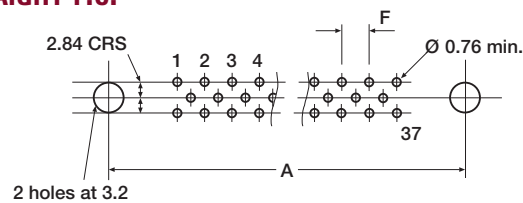


### 90° P.C.

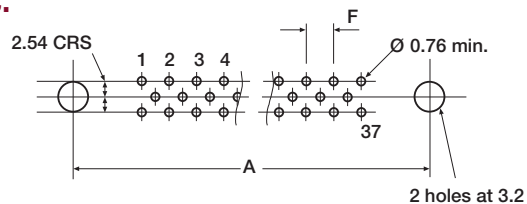


### PCB LAYOUTS

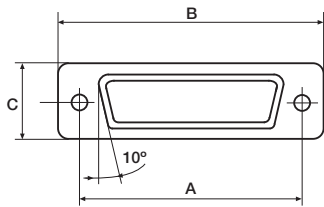
#### STRAIGHT P.C.



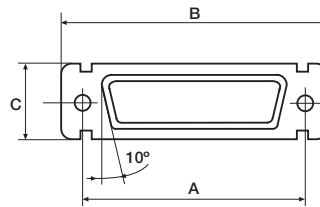
#### 90° P.C.



**FIXED CONNECTOR FRONT**

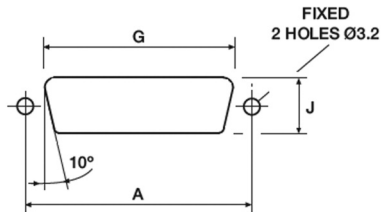


**FLOATING CONNECTOR FRONT**

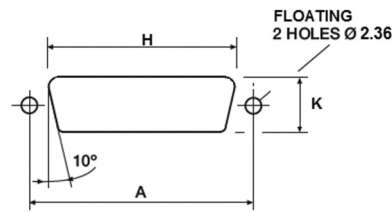


**MOUNTING DETAILS**

**FIXED CONNECTOR**



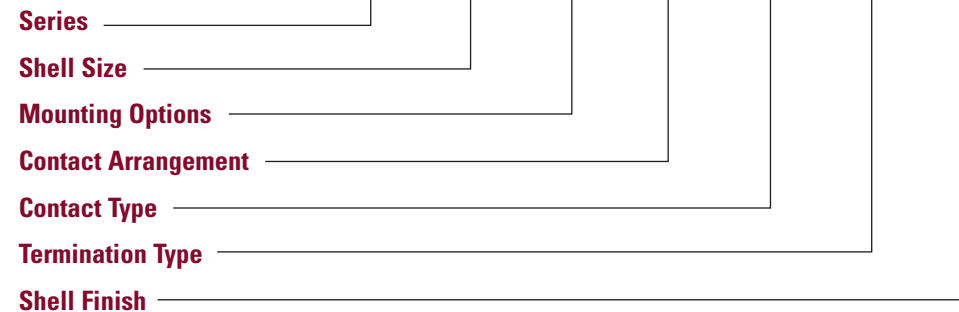
**FLOATING CONNECTOR**



**DIMENSIONS**

Contact Arrangement	A crs	B max.	C max.	E max.	F typ.	G	H	J	K
9	25.00	31.19	12.93	10.97	2.74	20.44	20.95	11.73	12.24
15	33.32	39.52	12.93	10.97	2.74	28.57	29.08	11.73	12.24
25	47.04	53.42	12.93	10.97	2.76	42.49	43.00	11.73	12.24
37	63.50	69.70	12.93	10.97	2.76	58.75	59.26	11.73	12.24

**ORDERING INFORMATION:**



**Series**

D - Standard

**Shell Size**

E, A, B, C

**Mounting Options**

No designator - Standard fixing holes  
 F - Float mount for rear panel mounting  
 H - 4-40 UNC threaded inserts fitted  
 N - 90° brackets and stabiliser with MD20418-2T fitted

**Contact Arrangement**

9, 15, 25, 37

**Contact Type**

P - Plug  
 S - Socket

**Termination Type**

No designator - Solder bucket  
 N - 90° p.c.  
 OL - Straight p.c.

**Shell Finish**

No designator  
 T - Tin (socket only)  
 TD - Tinned & dimpled (plug only)

**MECHANICAL / ELECTRICAL / CHARACTERISTICS:**

**Shell:**

Steel plated tin

**Insulator:**

Polyester rated UL94V-0

**Contact:**

Copper alloy plated hard acid gold

**Mechanical operations:**

500

**Operating temperature:**

-55°C to +105°C

**Current -**

**Individual contact**

(in isolation):

at 70°C Tamb. 6.5A

**All contacts**

simultaneously:

at 70°C Tamb. 3.3A

**Working voltage:**

500Vd.c. or a.c. peak

**Proof voltage:**

1500Vd.c. or a.c. peak

**Contact resistance:**

10mΩmax.

**Insulation resistance:**

1000MΩmin.