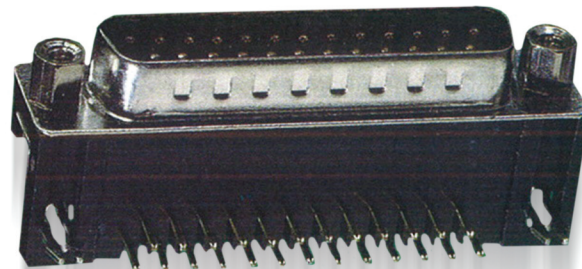
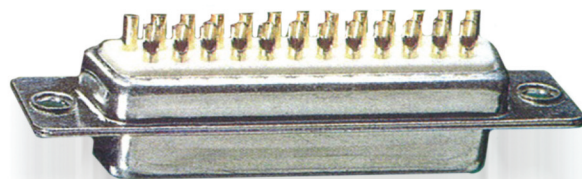


SPECIAL DEE

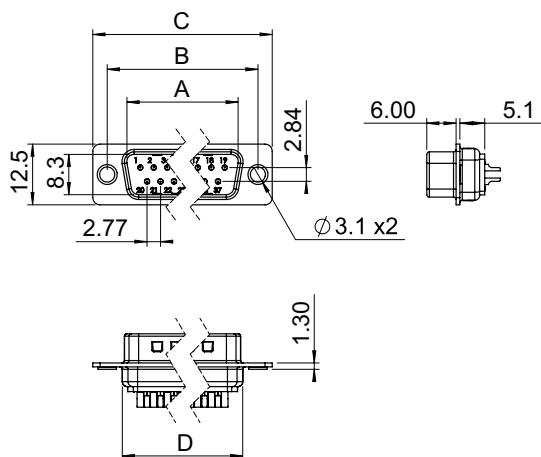
A range of Dee connectors utilising stamped and formed or turned contacts to provide a low cost option for commercial applications. Optional board locks on 90° p.c. versions act as an effective retention feature, holding the connector to the pcb prior to and during soldering.

KEY FEATURES:

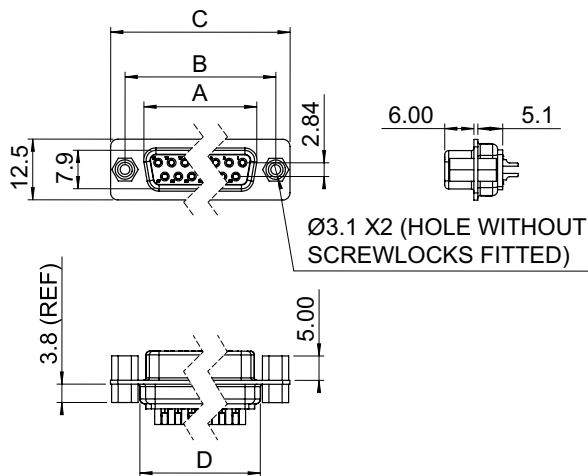
- Choice of three termination styles - solder bucket, straight p.c. and 90° p.c.
- Threaded inserts on 90° p.c. versions as standard - accepts a wide range of mounting hardware.
- Tinned and dimpled shell options - for EMI/RFI shielding.
- Optional boardlock feature for 90° p.c. types - reduces installation time.



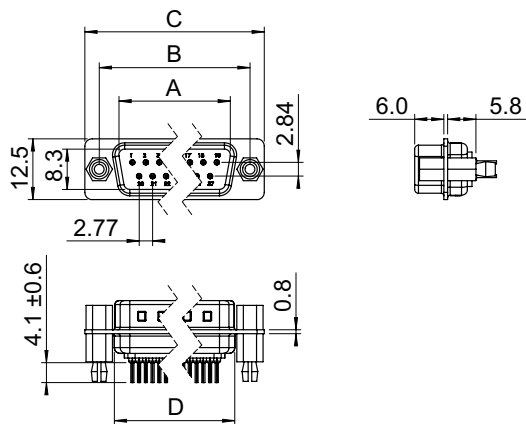
SOLDER BUCKET, MALE, 9-37 WAY



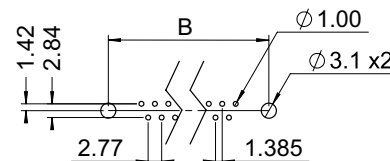
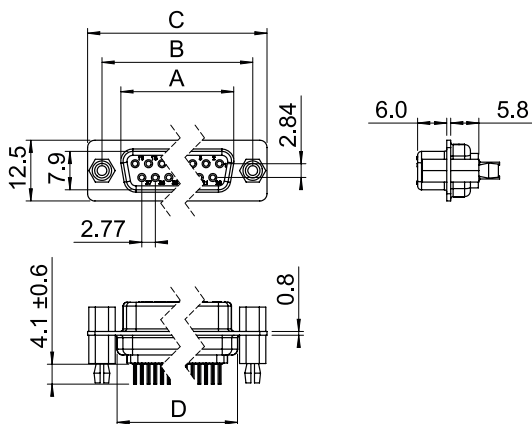
Position	A	B	C	D
9 Way	16.9	25.0	30.8	19.2
15 Way	25.3	33.3	39.2	27.7
25 Way	39.0	47.1	53.1	41.1
37 Way	55.4	63.5	69.4	57.3

SOLDER BUCKET, FEMALE, 9-37 Way

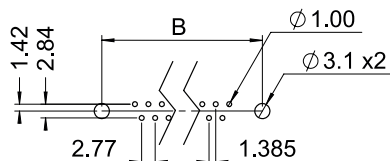
Position	A	B	C	D
9 Way	16.3	25.0	30.8	19.2
15 Way	24.6	33.3	39.2	27.7
25 Way	38.3	47.1	53.1	41.1
37 Way	54.8	63.5	69.4	57.3

STRAIGHT PC, MALE, 9-37 Way

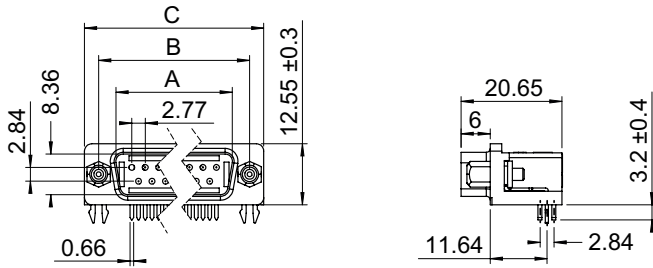
Position	A	B	C	D
9 Way	16.9	25.0	30.8	19.2
15 Way	25.3	33.3	39.2	27.7
25 Way	39.0	47.1	53.1	41.1
37 Way	55.4	63.5	69.4	57.3

RECOMMENDED PCB LAYOUT**STRAIGHT PC, FEMALE, 9-37 Way**

Position	A	B	C	D
9 Way	16.3	25.0	30.8	19.2
15 Way	24.6	33.3	39.2	27.7
25 Way	38.3	47.1	53.1	41.1
37 Way	54.8	63.5	69.4	57.3

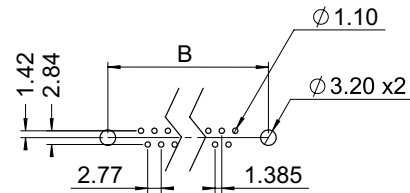
RECOMMENDED PCB LAYOUT

90° PC, MALE 9-37 WAY

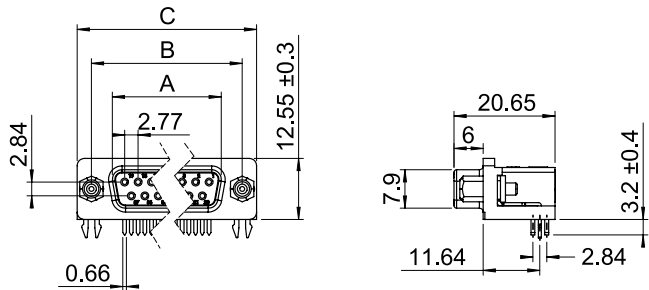


Position	A	B	C
9 Way	16.9	25.0	30.8
15 Way	26.4	33.3	39.2
25 Way	39.9	47.1	53.1
37 Way	56.4	63.5	69.4

RECOMMENDED PCB LAYOUT

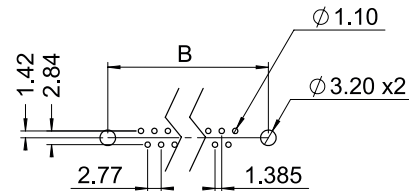


90° PC, FEMALE 9-37 WAY

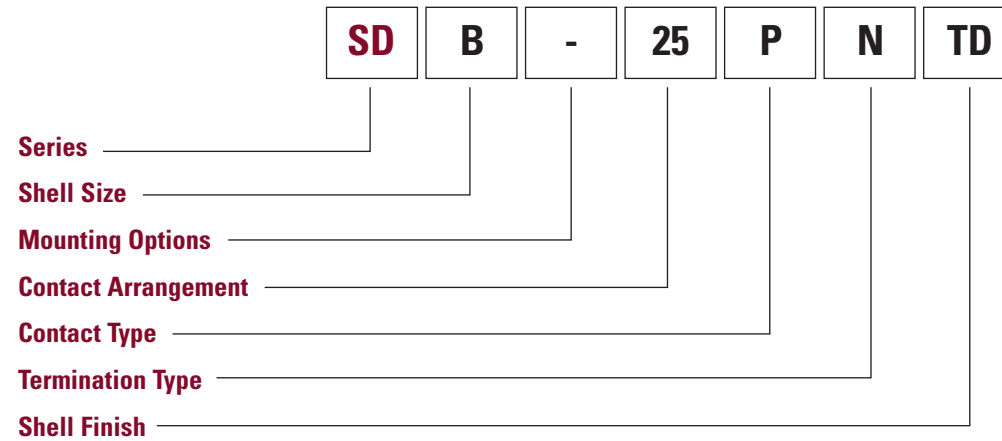


Position	A	B	C
15 Way	24.8	33.3	39.2
25 Way	38.3	47.1	53.1
37 Way	54.9	63.5	69.4

RECOMMENDED PCB LAYOUT



ORDERING INFORMATION:

**Series**

SD - Special Dee

Shell Size

A, E, B, C

Mounting Options

No designator - standard fixing holes
(90° p.c. has 4-40 UNC inserts as standard)
S - Screwlocks fitted
T - Boardlocks fitted
X - Screwlocks and boardlocks fitted

Contact Arrangement

9, 15, 25, 37

Contact Type

P - Pin
S - Socket

Termination Type

No designator - Solder bucket
N - 90° p.c.
OL - Straight p.c.

Shell Finish

T - Tin
TD - Tinned & dimpled (plug only)

**MECHANICAL /
ELECTRICAL /
CHARACTERISTICS:****Shell:**

Steel plated tin

Insulator:Glass filled thermoplastic
rated UL94V-0**Contact:**Copper alloy nickel/gold plated
with tin solder tails**Mechanical operations:**

100 cycles min.

Operating temperature:

-55°C to +105°C

Current -

**Individual contact
(in isolation)**
at 70°C Tamb. 3A

**All contacts
simultaneously:**
at 70°C Tamb. 2A

Operating voltage:
250V A.C. max.

Contact resistance:
30mΩmax.

Insulation resistance:
3000MΩmin. @ 500 V D.C.

Dielectric withstand voltage:
1kV A.C. for one minute