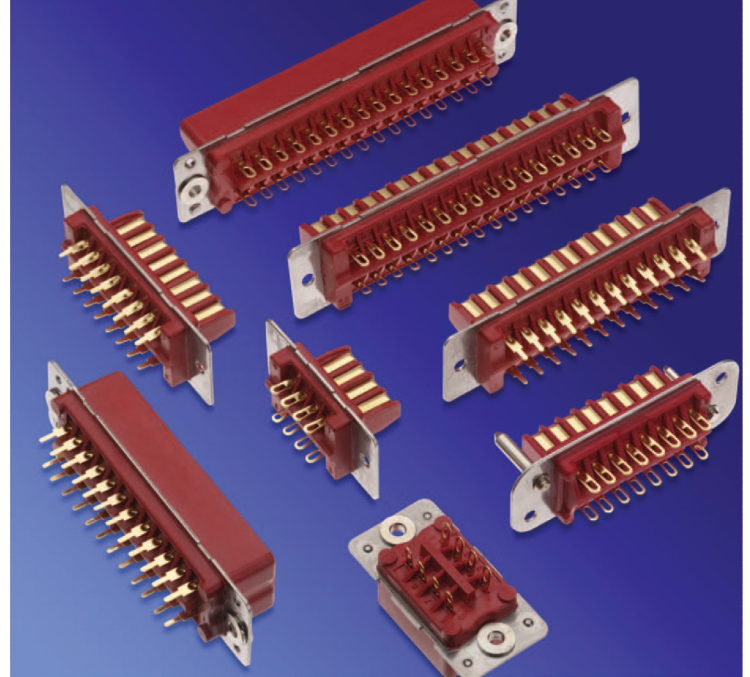


RED RANGE - INDUSTRIAL RACK & PANEL CONNECTORS

This comprehensive range of rugged rack and panel connectors is available in four sizes with options for both pcb or cable mounting. These connectors are used throughout industry in blind mating applications.

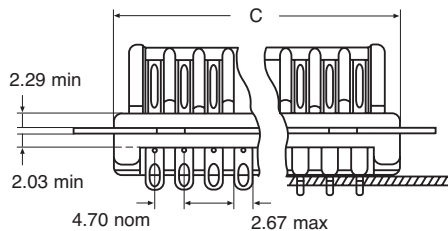
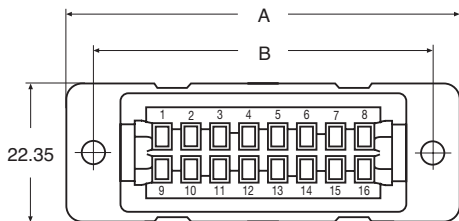
KEY FEATURES:

- Rugged construction
- 180° polarised
- Floating bushes to assist alignment
- Excellent current carrying characteristics
- Pcb or cable mounted
- Available in four sizes

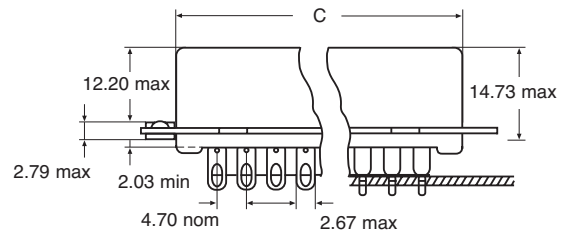
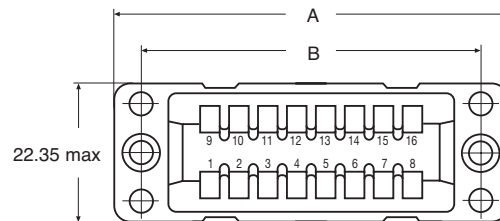


BARRIER POLARISED

PLUG



SOCKET

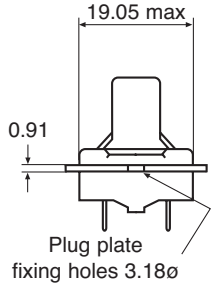


No. of ways	A max.	B crs	C max.
8	43.94	34.92	26.42
16	62.99	53.97	45.47
24	82.04	73.02	64.52
32	101.09	92.07	83.57

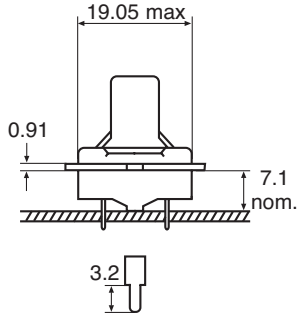
BARRIER POLARISED

PLUG

SOLDER TERMINATION

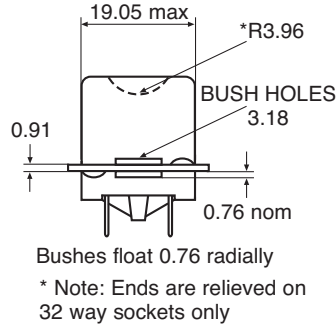


PC TERMINATION

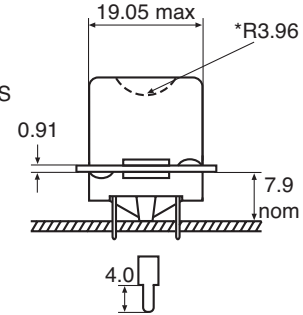


SOCKET

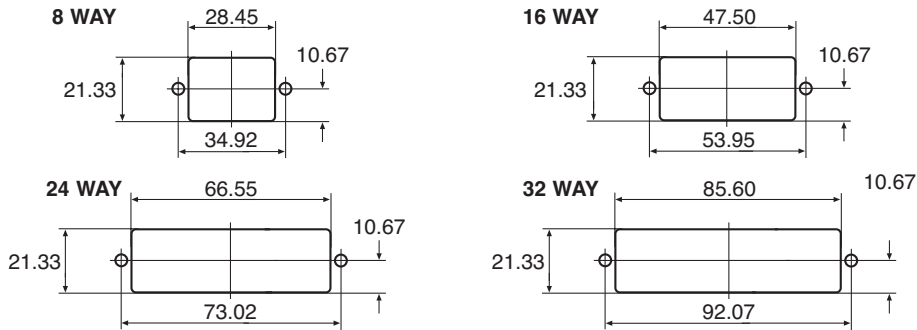
SOLDER TERMINATION



PC TERMINATION

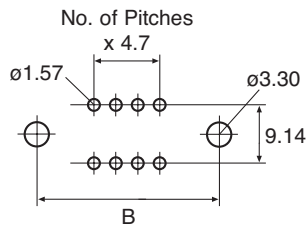


MOUNTING DETAILS

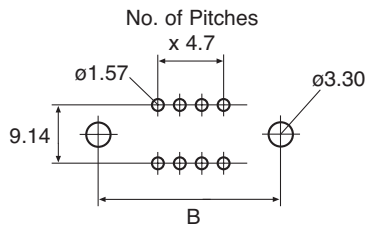


PCB LAYOUT

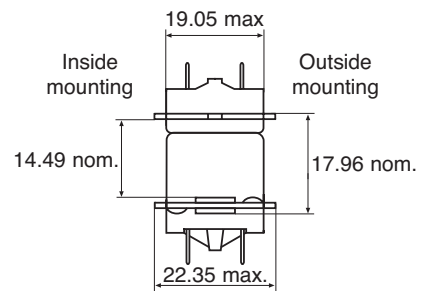
VIEW FROM REAR OF PLUG



VIEW FROM REAR OF SOCKET



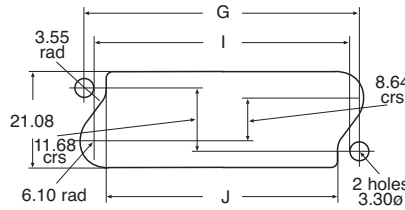
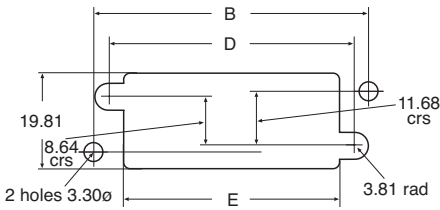
BARRIER POLARISED PLUG AND SOCKET MATED



DIMENSIONS & MOUNTING DETAILS FROM WIRING SIDE

PLUG

SOCKET



No. of ways	A max	B crs	C max	D crs	E nom	F max	G crs	H max	I crs	J nom
16 way	39.65	51.41	62.15	46.79	40.64	57.90	51.61	61.98	46.81	44.70
24 way	57.02	68.68	79.45	64.06	57.91	74.17	68.48	79.32	63.58	61.72
32 way	74.50	85.95	96.77	81.33	75.54	91.95	85.95	96.65	81.33	79.48

ORDERING INFORMATION

Description			Order Code	
Style	Gender	No. of ways	Moulding Material	
			Nylon PF	Diallyl-Phthalate
Barrier Polarised	Plug	8	RP8	DRP108
		16	RP16	DRP116
		24	RP24	DRP124
		32	RP32	DRP132
	Socket	8	RS8	DRS108
		16	RS16	DRS116
		24	RS24	DRS124
		32	RS32	DRS132

MECHANICAL / ELECTRICAL / CHARACTERISTICS:

Insulator:

Nylon PF or Diallyl-phthalate (DAP)

Contact:

Copper alloy plated hard acid gold

Mounting plates:

Stainless steel

Latching screws & bushes:

Mild steel bright nickel plate

Dowels:

Brass nickel plate

Covers:

Aluminium alloy

Mechanical operations:

Nylon PF / DAP - 500

Insertion and withdrawal force (per contact pair):

2.3N max / 0.8 min

Current –

All contacts (simultaneously):

Nylon PF - at 80°C Tamb. 5A max

DAP - at 100°C Tamb. 5A max

Working voltage:

Nylon PF / DAP - 800V d.c.

or a.c. peak

Proof voltage:

Nylon PF / DAP - 3.5k V d.c.

or a.c. peak

Contact resistance - (initially):

Nylon PF / DAP - 5mΩ max

- (after conditioning):

Nylon PF / DAP - 10mΩ max

Insulation resistance – (initially):

Nylon PF - 10⁹MΩ min

DAP - 10⁷MΩ min

- (after conditioning):

Nylon PF - 10⁴MΩ min

DAP - 10⁶MΩ min

Climatic category:

Nylon PF - 40/100/21

DAP - 55/125/56